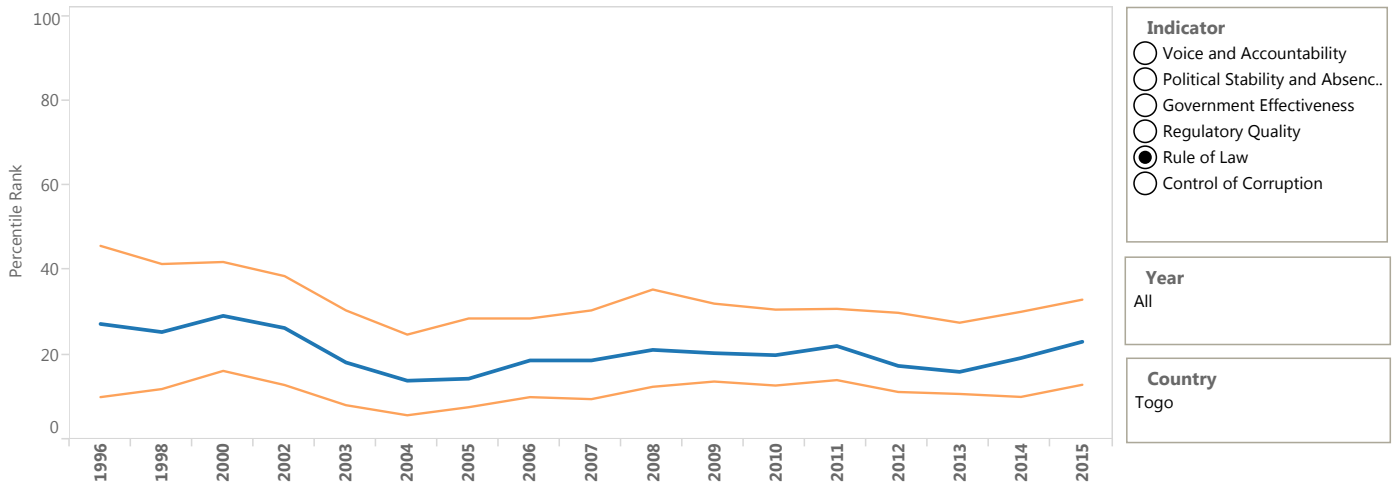


Worldwide Governance Indicators



Togo: Rule of Law



Source	1996	1998	2000	2002	2003	2004	2005	2006	2007	2008	2009	2010	2011	2012	2013	2014	2015
African Development Bank Count..		NP	NP	NP	NP	0.40	0.40	0.40	0.40	0.40	0.40	0.40	0.30	0.33	0.28	0.33	0.38
Afrobarometer													0.66	0.66	0.66	0.69	0.69
Bertelsmann Transformation Index				0.00	0.27	0.27	0.30	0.30	0.43	0.43	0.43	0.43	0.43	0.43	0.43	0.40	0.40
Cingranelli Richards Human Righ..	0.00	0.00	0.00	0.00	0.00	0.00	0.00	0.00	0.00	0.00	0.00	0.00	0.00	0.00	0.00		
Economist Intelligence Unit								0.31	0.31	0.34	0.34	0.34	0.34	0.34	0.34	0.34	0.38
Gallup World Poll								0.55	0.55	0.55	0.46	0.46	0.62	0.62	0.62	0.62	0.67
Global Insight Business Conditio..	0.50	0.50	0.50	0.50	0.38	0.39	0.38	0.44	0.44	0.50	0.50	0.50	0.50	0.44	0.44	0.50	0.50
Global Integrity Index															0.29	0.38	0.48
Heritage Foundation Index of Eco..		0.30	0.30	0.30	0.30	0.30	0.30	0.30	0.30	0.30	0.30	0.30	0.30	0.30	0.30	0.30	0.30
IFAD Rural Sector Performance A..						0.38	0.30	0.29	0.29	0.29		0.34	0.35	0.43	0.35	0.45	0.45
Institutional Profiles Database											0.23	0.23	0.23	0.33	0.33	0.33	0.33
Political Risk Services Internation..	0.50	0.50	0.50	0.50	0.50	0.50	0.50	0.50	0.50	0.50	0.50	0.50	0.50	0.50	0.50	0.50	0.50
US State Department Trafficking i..			0.50	0.50	0.67	0.00	0.33	0.67	0.67	0.67	0.67	0.67	0.67	0.67	0.67	0.67	0.67
World Bank Country Policy and I..		NP	NP	NP	NP	NP	0.30	0.30	0.30	0.30	0.30	0.30	0.40	0.30	0.30	0.30	0.30

Source: Kaufmann D., A. Kraay, and M. Mastruzzi (2010), *The Worldwide Governance Indicators: Methodology and Analytical Issues*

The Worldwide Governance Indicators are available at: www.govindicators.org

Note: The Worldwide Governance Indicators (WGI) are a research dataset summarizing the views on the quality of governance provided by a large number of enterprise, citizen and expert survey respondents in industrial and developing countries. These data are gathered from a number of survey institutes, think tanks, non-governmental organizations, international organizations, and private sector firms. The WGI do not reflect the official views of the World Bank, its Executive Directors, or the countries they represent. The WGI are not used by the World Bank Group to allocate resources.